

- A HISTORIC
GATEWAY TO
EUROPE'S FUTURE

EUCA PORTO





Table of Contents

- A HISTORIC GATEWAY TO EUROPE'S FUTURE



Find all the latest news on Portugal's candidacy at eucaporto.eu

05

Why Portugal?

A stable, safe and globally connected European country

12

Why Porto?

A dynamic, welcoming city with exceptional quality of life

30

Porto is the best fit.

The right scale, infrastructure and environment for the EUCA.





EUCA in Porto



**Exclusive
Headquarters**
financed by the
Portuguese State



**Health and
Education**
High quality,
widely accessible



Safety
7th safest
country in
the world
Global Peace Index



Accessibility
A strategic
platform for
European and
global connectivity



**Customs
Expertise**
Recognised
in Europe for
innovation and
efficiency



**Privileged
Position**
A commercial
gateway between
continents

City Profile



Population

252,687

residents (municipality, 2024)

1.8 million

in the metropolitan area

Demographics

45.9 years

residents (municipality, 2024)

8.2%

in the metropolitan area

Climate

15 °C

Annual average

~21–25 °C

Summer

~9–10 °C

Winter



Why Portugal?



A satellite night view of Europe, showing the continent's outline and the glowing lights of its cities and towns. The lights are concentrated in the western and central parts of the continent, with some smaller clusters in the east. The background is a deep blue, representing the night sky.

EUCA

EUROPEAN UNION
CUSTOMS AUTHORITY

As the westernmost country in Europe, Portugal occupies a **strategically important position for controlling the EU's external borders** and facilitating international trade.

Portugal's **privileged geographical position**, as well as its centuries-old history of openness to the world, makes the country – and especially the city of Porto - an **unparalleled bridge between Europe, Africa, and the Americas**.

Within this context, Porto stands out as a **highly connected and globally oriented hub**, with unmatched quality of life and a welcoming atmosphere, where tradition, culture, innovation and authenticity meet.

Once established in Porto, EUCA would benefit from geographical advantages and one of the most technologically advanced Customs Authorities in Europe.



Paulo Rangel
Minister of State and
Foreign Affairs

*“When you look at the location of this city,
When you look at its historic relation with all
countries of Europe,
When you look at its ties to Africa, North and South
America, Middle east, India, Far east,
When you look at its infrastructure, transports,
education, and culture,
and when you look at its deep rooted tradition of
trade,*

*It feels as if the Romans founded Porto,
the Port of Europe,
already envisioning that one day the headquarters
of EUCA would be here.*

*Two thousand years waiting for this destiny.
Help us make Porto's destiny come true.”*



Joaquim Miranda Sarmento
Minister of State and Finance

“As the westernmost country in Europe, Portugal has long stood at the crossroads of maritime routes and global trade. This heritage, combined with decades of accumulated expertise in customs management and border control, makes Portugal a strategic partner in safeguarding the European Union’s external borders.

The excellent work carried out by the Portuguese Customs Authority is widely recognized both nationally and internationally, having received multiple awards in several areas. As one of the most innovative and technologically advanced customs administrations in Europe, our Authority is well known for its high standards of quality and efficiency in tax and customs management.

Hosting EUCA in Porto will be an exceptional opportunity to further consolidate this expertise and reinforce Portugal’s leadership in the customs domain.”

EUCA's Mission through the lens of our History

Surrounded by the sea and with a long legacy in customs activities, **Portugal is the ideal location to host the new European Customs agency – EUCA.**

With a high-capacity port and airport network, Portugal serves as **one of the main gateways for goods entering and leaving the European Union** via the Atlantic Ocean.

The Portuguese Customs, integrated into the Tax and Customs Authority (AT), have played an extremely active role in the formulation, implementation and evolution of the European Customs policy, acting as an external border and ensuring the uniform application of the Union Customs Code. In addition, Portugal is fully committed to **promoting best practices in trade security, simplification and facilitation.**

Portugal Tax and Customs Authority (AT) is among the most technologically advanced in Europe, shaped by high efficiency levels in tax and customs management. It has received several awards and distinctions for its achievements in areas such as e-invoicing, the control and clearance of medical and pharmaceutical products and the simplified export verification regime.

Portugal also demonstrates one of the **highest levels of public sector digitalization in Europe**. In the European e-Government Benchmark 2025, Portugal rose from 14th to 8th place, standing above the EU average across all key areas — from online service delivery to interoperability and digital usability.



Since Portugal's foundation in the 12th century, **Porto has stood as a vital maritime and river trading hub on the Douro River**, playing a key role in shaping the nation's commercial history.

The city's location created favourable conditions for the establishment of early customs operations. The first customs house **"Alfândega Velha do Porto"** was established in the late 14th century to oversee trade between Portugal and other European nations.

Over the centuries Porto's Customs House became a **cornerstone of trade regulation and taxation** for goods flowing along new Atlantic and Eastern routes.

Its successor the **"Alfândega Nova do Porto"** was established in 1869 and confirms Porto's role as a powerhouse of Portuguese commerce and a pioneer in modern customs management.

Today, as a **UNESCO World Heritage Site (since 1996)** the building stands as a monument to both Portugal's maritime legacy and administrative innovation.



Today, the city remains closely connected to global trade routes, supported by modern port and transport infrastructures, ensuring a distinctive geographical balance.

A strategic European gateway to international institutions that require both operational efficiency and global connectivity.



Why Porto?



EUCA

EUROPEAN UNION
CUSTOMS AUTHORITY



QUINTA DOS MALVEDOS

P-49-AL

Porto

Porto is **one of the oldest cities in Europe**, its history evolving alongside the formation of Portugal. Granted its first charter in 1123, the city quickly asserted itself as an autonomous territory with a strong civic and commercial identity. From the Middle Ages onwards, **Porto grew as an important mercantile centre, shaped by the meeting of the Douro River and the Atlantic**, which fostered intense maritime and fluvial activity and a distinct cosmopolitan character.

From the 16th century, **the wine trade strengthened the city's international projection**, attracting a significant British community that left a lasting mark on Porto's economic and cultural life.

The classification of its **Historic Centre as a UNESCO World Heritage Site in 1996 and its role as European Capital of Culture in 2001** further strengthened the city's position on the international stage, supporting significant urban regeneration.

Today, Porto stands as a dynamic and increasingly recognised European city, where talent, knowledge, culture and investment naturally converge.

- A historic gateway to Europe's future.



About Porto

City Profile



Population

252,687

residents (municipality, 2024)

1.8 million

in the metropolitan area

Geography

41.8 km²

Area

5,700 people per km²

Density

Compact,
walkable, human-
scale city

Demographics

45.9 years

residents (municipality, 2024)

8.2%

in the metropolitan area

Climate

15 °C

Annual average

~21–25 °C

Summer

~9–10 °C

Winter

Mild Atlantic-
Mediterranean climate,
no extremes



Recognitions and Awards

Turism & Quality of Life

Europe's Leading City Destination

World Travel Awards 2025

Among Europe's friendliest cities

Condé Nast Traveller 2025

Economy & Investment

#1 European City of the Future for FDI

Strategy | *Financial Times 2025*

Portugal: 4th worldwide for lowest

restrictions on foreign investment

OCDE

Digital Infrastructure

Among Europe's fastest and most

reliable broadband/5G performers

European Commission & MWC

Environment

Green Flag Awards for leading

urban parks



Pedro Duarte
Mayor of Porto

"Porto is a city shaped by the river and the sea, where a maritime culture and an outward-looking spirit have grown over centuries of trade. This geography made Porto a historic gateway for people, goods and ideas, forging a tradition of openness that continues to define the city today. The Old Customs House (Casa do Infante) and the New Customs House (Alfândega do Porto) remain enduring symbols of this long connection to global commerce and customs administration.

This legacy endures in a modern city with a strong international outlook, a dynamic economy and an environment that attracts talent, creativity and innovation. Porto offers stability, excellent healthcare, a resilient school network, rich cultural and leisure opportunities and solid connectivity – conditions that make it exceptionally well placed to host the headquarters of the European Union Customs Authority.

What ultimately distinguishes Porto, however, is its spirit. The city has resisted the homogenisation that shapes so many urban centres, remaining authentic and deeply connected to its community. It is this combination of institutional strength and human warmth that makes Porto not only a capable host for the EUCA, but a place where its staff and families can genuinely thrive."

Access to Europe and Beyond

Porto occupies a strategic Atlantic position with fast, direct access to major European markets. Its time zone, multimodal transport network and proximity to global routes make the city an efficient gateway for international teams and institutional operations.

Air Connectivity

- 100+ direct destinations
- 80+ cities connected
- 25+ countries
- Multiple daily flights to EU capitals
- 11 km from the city centre
- Best Portuguese Airport — AirHelp
- Multiple ACI Awards for service quality
- 2026 expansion with new long-haul routes

Porto – Madrid	1h15m
Porto – Barcelona	1h50m
Porto – Paris	2h25m
Porto – Berlin	3h30m
Porto – Frankfurt	3h10m
Porto – London	2h40m
Porto – Vienna	3h20m
Porto – Amsterdam	2h55m
Porto – Rome	2h50m
Porto – Brussels	2h40m
Porto – Milan	2h30m
Porto – Helsinki	4h35m
Porto – Oslo	4h00m
Porto – Stockholm	4h15m



Francisco Sá Carneiro Airport is one of Europe's most efficient and high-performing mid-sized airports — a genuinely international gateway that positions Porto at the centre of the continent's air network.

Repeatedly distinguished by Airports Council International for **outstanding service quality**, the airport has also been ranked **Portugal's best-performing airport by AirHelp**, reflecting exceptional levels of reliability, comfort and passenger experience.

With **direct flights to over 100 destinations in Europe**, North America and key global hubs, the airport offers multiple daily connections to Brussels, Paris, Madrid, London, Berlin, Amsterdam, Luxembourg and Rome, operated by major European and international carriers, as well as direct routes to cities in the United States, Brazil and several African destinations.

Its strategic expansion planned for 2026 will reinforce long-haul connectivity, opening new routes to North America and additional European capitals.

Located just **11 minutes from the city centre**, with seamless access by metro, bus and taxi, the airport ensures fast transfers, low congestion and consistently short travel times — ideal conditions for international institutions requiring operational efficiency and predictability.

The airport's strong track record in handling both full-service and low-cost operations — including TAP Air Portugal, Lufthansa, KLM, Ryanair and EasyJet — demonstrates Porto's capacity to support diverse mobility needs while ensuring resilience and competitive air access.



Maritime Access

Porto is served by the **Port of Leixões**, a critical Atlantic logistics hub and part of the TEN-T network.

It supports container traffic, cargo operations and cruise activity, anchoring Porto's commercial relevance within the Iberian Atlantic corridor.



Rail Network

Porto is well integrated into Portugal's national rail network. **Campanhã and São Bento stations offer frequent high-speed and intercity services**, reducing travel time to Lisbon to under 3 hours.

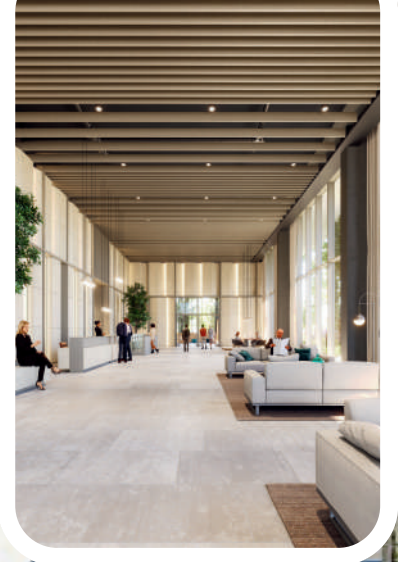
Upcoming High-Speed Rail links will further shorten connections to Lisbon and Vigo, strengthening Portugal-Spain-EU mobility.



Metro & Urban Mobility

Porto offers a compact, integrated and sustainable mobility system combining **Metro do Porto, STCP buses and suburban rail**.

The metro provides **fast connections** across the metropolitan area, while forthcoming public transport policies — including plans for citywide free access — aim to further reinforce accessibility and inclusiveness.



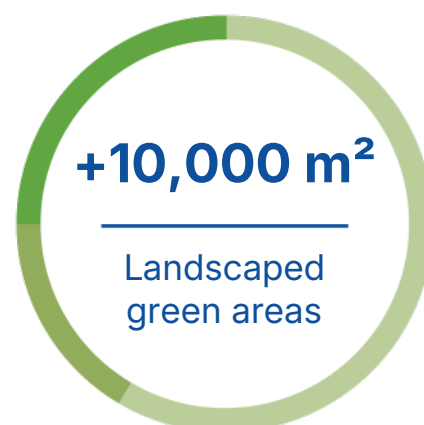
17 min
Airport → Viva Offices

10 min
City Centre → Viva Offices

5 min
Walk to 2 metro stations



An exclusive home for EUCA



1. A Dedicated European Headquarters

Viva Offices will serve as the **exclusive headquarters for the EUCA** fully covered by the Portuguese State.

The B Building offers **7,140 m²** of next-generation workspace across five floors, designed for **single-tenant security**, controlled access levels and future expansion. Its layout enables full integration of all programme areas required for an European authority.

2. Strategic Location and Exceptional Connectivity

Located in Porto's Business District, one of the city's fastest-growing areas, Viva Offices **provides direct, effortless access** to key transport hubs.

Two metro stations within a five-minute walk ensure rapid connections to the **airport (17')**, the city centre (10') and major business areas. The site also benefits from **direct links to the A28, VCI and A1**, guaranteeing efficient mobility across the metropolitan region and beyond.

3. A Sustainable, High-Performance Campus

Designed by Broadway Malyan, the complex meets the highest standards of **innovation, sustainability and user comfort**.

It holds LEED Platinum and WiredScore certifications, features 10,000+ m² of landscaped green areas and 300+ parking spaces, including EV charging and bicycle parking.

With **24/7 secured access**, advanced monitoring and a rooftop leisure space, Viva Offices delivers a **modern, resilient and future-ready headquarters** for an European authority.





WHERE QUALITY OF LIFE MEETS EUROPEAN PURPOSE

Porto offers **everything that makes a city truly liveable**: a welcoming community, vibrant culture, abundant green spaces, efficient transport, modern health and educational infrastructures, human scale, lively street commerce, outstanding gastronomy, safety, mild climate, and a thriving job market.

The city of Porto embodies Portugal's tradition of openness and tolerance, standing out as an **excellent hub for people from all over the world**, offering excellent connectivity to Europe and the rest of the world.

The Porto region is increasingly being recognized as a **centre of industry, innovation, investment**, and tourism, offering ideal conditions not only for the effective operation of EUCA – the European Union Customs Authority – but also for a **pleasant and safe life environment** offered to its staff and their families.

Porto combines **rich history with forward-looking modernity** — a place where tradition meets technology. **Hosting the EUCA in Porto would bridge past and future, a place where European identity, progress, and inspiration converge.**

A strong international and multilingual education ecosystem

The city of Porto offers diverse **multilingual and European-oriented educational opportunities** through private international schools, public bilingual programmes, and additional language support initiatives.

International Schools in Porto

School	Approx. Capacity
Lycée Français International de Porto	~1,500 pupils
Deutsche Schule zu Porto	~700 pupils
Oporto British School	~576 pupils
CLIP – Colégio Luso-Internacional do Porto	~1,000 pupils
Colégio Júlio Dinis – International School	~400 pupils

All institutions follow European or international curricula such as the French Baccalauréat, German Abitur, British IGCSE, IB Diploma, and Cambridge AS/A-Level, promoting multilingual proficiency, European perspectives, and intercultural competence.

The Lycée Français International de Porto, Deutsche Schule zu Porto and CLIP – Colégio Luso-Internacional do Porto are located at a distance **of less than 5 kilometres from the premises**, offering easy daily access to high-quality international education.

Public Bilingual Schools

School	Approx. Capacity
António Nobre School Group	~123 pupils

The Portuguese-English bilingual programme for primary education is focused on multilingual skills, European-oriented teaching and intercultural competence.

The school is located at a distance of less than **10 kilometres** from the premises.

Complementing this offer, **all public schools provide “Português Língua Não Materna” (PLNM)**, a structured programme designed to support students whose first language is not Portuguese, reinforcing both academic progress and social integration.



“

In Porto, multilingual education is not an exception but a standard — a city where languages open doors and every learner finds the support they need to succeed.



Porto: a premier academic and research capital in Europe

Porto's higher education system is among the most **diverse and comprehensive in Portugal**, encompassing public and private universities, polytechnic institutes, and leading research centers with **over 80,000 students**. With a focus on internationalization through Erasmus+ programs, double degrees, and European research network, it stands as the **main university and technological hub in northern Portugal**



University of Porto

300 degree programs
165 masters
94 PhDs
15 faculties



Private Universities/ Polytechnic

12 faculties



Porto Polytechnic Institute

58 undergraduate courses
77 master's programs
8 faculties

University of Porto ranks among the **top 100 European** and **top 350 global** universities for excellence



Academic Areas

- Architecture
- Fine Arts
- Humanities
- Sciences
- Nutrition and Food Sciences
- Sports Sciences
- Law
- Economics
- Engineering
- Pharmacy
- Medicine
- Dental Medicine
- Psychology
- Education Sciences
- Biomedical Sciences
- Nursing
- Accounting and Administration
- Technology and Management
- Health Sciences
- Music and Performing Arts
- Hospitality and Tourism
- Media Arts and Design
- Arts and Communication
- Business and Management
- International Relations
- Advanced Technologies
- Veterinary Medicine
- Environmental Sciences
- Geography
- History
- Philosophy
- Sociology
- Languages, Literatures and Cultures
- Artificial Intelligence
- Data Science
- Digital Health
- Bioengineering
- Biology
- Chemistry
- Physics
- Geology
- Geospatial Engineering
- ... Among Others

Childcare Availability for families working in the Porto region



6th best in the world

Portugal ranks #6 globally
in the 2024 EF English
Proficiency Index



Excellence and accessibility in Healthcare services

Porto ranked in the **Top 20 worldwide** for healthcare in **World's Best Cities 2026**.

Coverage & Accessibility

- Porto has **one of the highest family doctor coverage rates in Portugal**.
- Non-urgent situations are supported by the **SNS 24 helpline** (triage, advice, and guidance also available in English).
- **SNS 24 psychological counselling**.

Social Protection for EU Staff Families

- Portugal offers a structured system that ensures **access to medical care and social protection for family members of European employees**, provided residency and registration criteria are met.

27 of these units are located within 5 km of the EUCA site.

Hospital Network

- Public Hospitals
- Private Hospitals
- Social and Solidarity sector hospitals



Public Hospitals includes **São João** and **Santo António**, both national reference centres (excellent clinical outcomes + short waiting times).



A safe, welcoming and stable European city

International assessments of safety & livability

- Porto is widely recognised as a trustworthy and welcoming city for families and international professionals.
- Top 10 in Safety & Security — *Expat Insider 2025*
- Listed among the safest cities worldwide for female digital nomads — *Holidu 2025*
- Identified as one of the best cities in Europe for family living — *Sumo Finans (2021)*

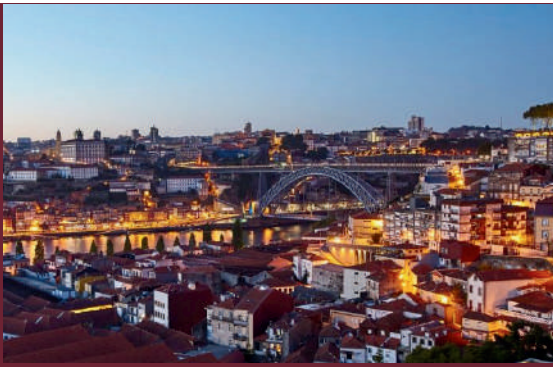
Demographics & openness to the world

- In 2024, Porto hosted 58,000 foreign residents, representing 22% of the population.
- This number is four times higher than in 2019, demonstrating the city's increasing attractiveness and international openness.

A supportive environment for EUCA families

- Porto offers a stable and community-oriented urban environment, supported by:
 - effective public services
 - strong social cohesion
 - a culture of openness and inclusion

A city designed for living well



Cost of Living in Porto



Cost of Living
→ 1,012€/month



Dinner
→ 15€



Taxi price (~3km/2mi)
→ 3.50€/trip



Coca-Cola (0.3L)
→ 2€



Coworking hot desk
→ 296€/month



Mobile data (~10GB)
→ 18€/month



Hotel (median price)
→ 82€/trip



Estimated tax on 50.00€
→ 22,166€



Airbnb (median price)
→ 128€/night



Estimated tax on 100.00€
→ 43,081€



Internacional school
→ 8735€/year



Estimated tax on 250.00€
→ 105,826€



Accommodation

Porto offers a diverse, high-quality accommodation market with around **30,000** beds across hotels and short-term rentals.

About **40%** of hotel rooms are in **4-star** properties and **15%** in **5-star hotels**, supported by leading international brands such as **Marriott, Accor, Hilton, InterContinental, IHG and NH Hotels**.

Visitor satisfaction is exceptionally high, with a 6.3/7 overall rating (Porto City Council, 2025).



Culture Access

Porto offers wide and affordable access to cultural institutions, **with free or discounted entry to museums, theatres and heritage sites**. Portuguese citizens and residents with NIF can visit **37 national museums**, monuments and palaces **free** of charge on 52 days each year.

In addition, Porto offers to its residents **free entry** to Museu do Porto, **30% discount at the Porto Planetarium**, priority entry at Livraria Lello, and **20% reductions at the Coliseu do Porto and Teatro Nacional São João**.

The city combines a rich historical heritage with a vibrant contemporary arts scene, from museums and **theatres to literature and music**. This cultural diversity shapes Porto as a creative and intellectually dynamic place to live.



Sport

Porto has a strong sporting tradition and extensive facilities — municipal complexes, university sports centres and professional venues of **FC Porto and Boavista FC**.

The city regularly hosts major international events, including the **WRC Rally de Portugal, Porto Marathon, UEFA Nations League Final Four and the UEFA Champions League Final**.

Large parks and expanding cycle lanes promote an active, healthy lifestyle, reinforced by Porto and Gaia's designation as **World Capital of Sport 2028**.

Benefits include **50% discounts at municipal swimming pools**, special prices at the Monte Aventino Tennis Complex, and reduced fees at RUNPorto events.



Gastronomy & Wine Tradition

Porto is recognised internationally for its distinctive cuisine and long-standing connection to **Port Wine**. **Traditional dishes and wine culture contribute** to the city's strong identity and global gastronomic reputation.



Contemporary Food Experience

A diverse food scene ranges from traditional taverns and family-run restaurants to **innovative culinary projects and fine-dining venues**. The renewed Bolhão Market showcases **high-quality local products**, reinforcing authenticity and daily quality of life.



World's Leading City Destination
World Travel Awards, 2022

World's Leading Seaside Metropolitan
Time Out, 2025

Two UNESCO World Heritage Sites
Porto Historic Centre Douro Wine Region



Porto is
the best fit.





EUCA

EUROPEAN UNION
CUSTOMS AUTHORITY

Welcome benefits for families in Porto



Tax Benefits

EUCA staff will benefit from **tax and customs exemptions**, including tax-free salaries, duty-free import of personal belongings and vehicles, and exemption from visas and administrative charges. Additional advantages include **exemptions on property acquisition or leasing**, selected goods and services above €100, and on electricity, gas and fuel.

Portugal also offers eligible professionals a 20% flat personal income tax rate for 10 years for high value-added activities.



Mobility, Daily Life and Health Care

Porto offers accessible mobility for residents, including **free public transport for under-23s**, discounted travel through the **Porto Card**, and a wide network of public services.

The Porto Card (free for residents) provides **discounts across transport, culture, sport and municipal facilities**, making daily life easier and more affordable.

Residents also benefit from universal access to **Portugal's National Health Service**, ensuring reliable and comprehensive healthcare.



International Education

Families benefit from favourable conditions in Porto's international schools, many of which offer **multi-child tuition discounts**. Examples include:

- **Lycée Français International de Porto:** 10% off (2nd child), 20% (3rd), 40% (4th+)
- **Deutsche Schule zu Porto:** ~5% (2 children), ~15% (3), ~50% (4)



Integration Support

Dedicated municipal services help **international families** settle smoothly in Porto by providing **practical assistance**, language support and guidance on key areas such as **education, housing and employment**. Through initiatives including **intercultural mediation, mentoring programmes and community workshops**, the city ensures newcomers feel welcomed, informed and fully integrated into local life, reinforcing Porto's reputation as an **open and supportive European city**.



A city creating opportunities and global growth

Portugal is currently outperforming much of Europe, with **resilient economic growth**, rising employment and strong public and private investment. As one of the country's leading economic centres, Porto stands out for its **internationally oriented, innovation-driven economy**.

In recent years, the city has attracted **€5.2 billion in foreign investment** and created over **30,000 jobs**, earning recognition as "Best European City for FDI Strategy" by fDi Intelligence. Its corporate landscape includes major multinational and technology-driven firms such as **Natixis, Euronext, Volkswagen Digital Solutions and Dachser**.

Supported by a large concentration of **universities, research centres, start-ups and shared service hubs, Porto offers strong opportunities in IT, business services, engineering and the creative industries**. Integrated within Northern Portugal — the country's most industrialised and export-oriented region — the city benefits from a robust productive base and highly skilled talent.

Overall, Porto provides a diverse, competitive and globally connected labour market, offering solid prospects for EUCA staff and their families.



Built for what comes next.





Find all the latest news on Portugal's
candidacy at eucaporto.eu

